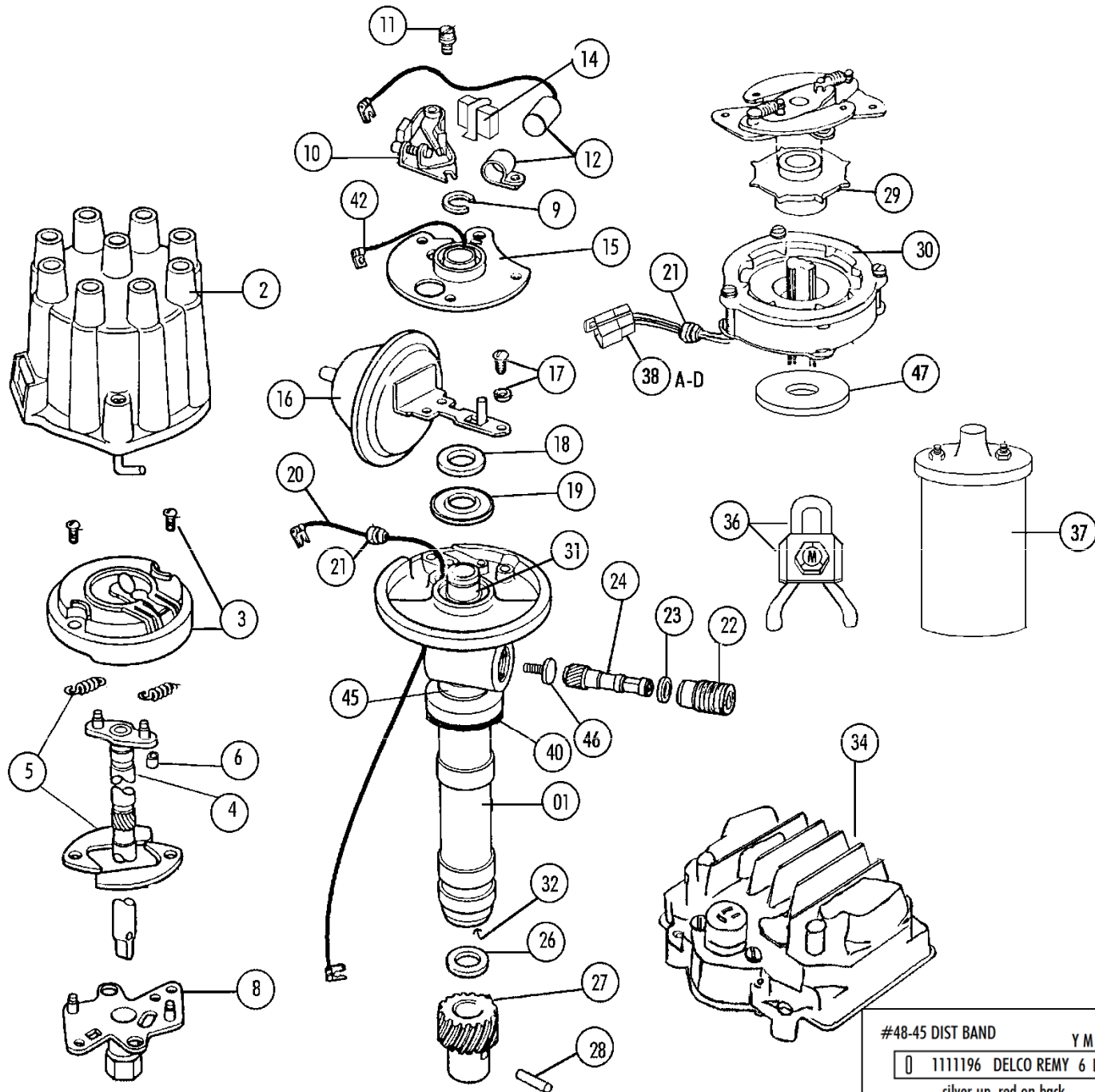


# Section 48 Distributor parts, Vacuum Advance, Ignition Coils & Transistor Ignition Parts



#48-45 DIST BAND Y M D  
 1111196 DELCO REMY 6 L 14  
 silver up, red on back  
 specify car info, TI or No, Engine, vin or build date

# Section 48 Distributor parts, Vacuum Advance, Ignition Coils & Transistor Ignition Parts

Sec- Part#	Name	Year	#need/Car	Price
48-01	Distributor – NOS/ Delco in Box 327 Distributor	63-7	1	\$ online
48-02A	Distributor Cap (replacement- No Writing)	63-7	1	\$ 15.00
48-02B	Distributor Cap F.I.(Replacement- No Writing)	63-5	1	46.00
<b>48-02C</b>	<b>Distributor Cap F.I. "Delco Remy PATENT PENDING"</b>	<b>63-5</b>	<b>1</b>	<b>135.00</b>
48-02D	Distributor Cap "Delco-Remy PATENT PENDING"Black	63-7	1	65.00
48-03	Distributor Rotor (with Screws) (ext copper tip)	63-7	1	15.00
48-04A	Distributor Shaft (std)(250-300hp,390hp,400hp)	63-7	1	69.00
48-04B	Distributor Shaft (hiperf)(340-365hp,425-450hp)	63-7	1	69.00
48-04C	Distributor Shaft, Fuel Injection (NO Gear!)	63-5	1	69.00
48-05	Spring And Weight Kit	63-7	1	15.00
48-06	Rubber Sleeve (original)	63-7	1	2.00
48-06B	Metal Sleeve	63-7	1	3.00
48-08	x Cam & Plate	63-7	1	N/A
48-09	Retainer Spring Clip	63-7	1	3.00
48-10A	Distributor Points (Delco)	63-7	1	22.00
48-11	Screws For Points (pr)	63-7	1 PR	1.50 Pair
48-12	Capacitor And Bracket (replacement)	63-7	1	4.50
48-12B	Capacitor & Bracket (DR With Part Number)=53-03N	63-7	1	20.00
48-13	Capacitor Screw & Lw	63-7	1	0.75
48-14A	Cam Lubricating Wick And Retainer	63-7	1 SET	10.50 Set
48-14B	Distributor Cam Lubricant (10 Capsules)	63-7	1 BOX	3.00 Box
48-15	Base Plate & Wire	63-7	1	25.00
Repros with #in ( ) stamped.				
48-16A	<b>Vacuum Advance</b> (201)63 All,64 250-300hp,65-7 425-435hp	63-7	1	\$ 40.00
48-16B	Vacuum Advance (236)64-7 350-375hp; 65 250-375hp	64-7	1	40.00
48-16D	Vacuum Advance (360) 67L 390-400hp	67L	1	40.00
48-16E	Vacuum Advance (355) 66-7 300hp,66-7E/390&400 Hp	66-7	1	40.00
48-16F	Vacuum Advance (373) 66L-7 L-88	66L-7	1	60.00
48-17	Screws & Washers For Vacuum Advance (pr)	63-7	1 SET	0.75 Set
48-18A	Shaft Felt Seal	63-7	1	1.75
48-18B	X Distrib Shaft & Gear Lube Under Felt -gone	63-7		n/a
48-19	Shaft Plastic Seal (under Felt)	63-7	1	3.00
48-20	Wire Lead (without Grommet)	63-7	1	14.00
48-21	Grommet For Wire Lead (Std & TI)	63-7	1	3.00
48-22	Tachometer Cable Coupling	63-7	1	15.00
48-23	Tach Gear Washer	63-7	1	2.00
48-24	<b>Tach Driven Gear</b>	63-7	1	30.00
48-25	xDistributor housing	63-7	1	N/A
48-26A	Lower Gear Shim (.005")	63-7	1-3	2.00 Each
48-26B	Lower Gear Shim (.030")	63-7	1-3	2.00 Each
48-26C	Lower Gear Shim (.010")	63-7	1-3	2.00 Each
48-27	Lower Gear	63-7	1	24.00
48-28	Lower Gear Pin	63-7	1	0.50

**see section 37 for tachometer cables and grommets.**

Returns – With Invoice Up To 30 Days – No Restock  
30- 60 Days 15% Restock  
No returns after 60 days or without invoice.

**(No returns on dated items, electrical parts. No returns on Tools nor section 02)**

>> Photos online <<

Sec- Part#	Name	Year	#need/Car	Price
48-29	<b>Pole Piece (TI)</b>	63-7	1	\$ 120.00
48-30	Pickup Coil (TI) With 38A (connector) & Grommet	63-7	1	239.00
48-30B	x Pick Up Coil Wires & Bobbin Only x no more see 48-30	64-7	1	n/a
48-31	Upper Shaft Bushing	63-7	1	7.50
48-32	Lower Shaft Bushing	63-7	1	7.50
48-33	Bushing Installation Tool- (for Both Bushings)	63-7	1	9.00
<b>48-34</b>	<b>TI Amplifier Complete</b> (USA)(Solid State)	64-7	1	\$ 425.00 Each
48-34B	TI Amplifier Box <b>Module</b> (complete internal works) Solid State (USA)	64-71	1	169.00
48-36	<b>Distrib Wire Holddown, Reinf &amp; "TR" Bolt Set</b>	63-7	1 SET	14.00 Set
<hr/>				
48-37A	x Coil- Non T.I.(replacement)	63-7	1	discontinued.
48-37B	x Coil- T.I. (good replacement- No "Delco") – no more	64-7	1	discontinued.
<hr/>				
<b>Ignition Coils - standard and TI = the K&amp;B repro -see photos online- no returns(electrical items)</b>				
48-37C	<b>Ign Coil</b> (091)(63 Early All;64 365-375hp Std Ign)	63-4	1	90.00
48-37D	Ign Coil (087)(63 Mid-late All;64 250-300hp)	63-4	1	90.00
48-37E	Ign Coil (202)(all 327 With Standard Ign)	65-7	1	90.00 Each
48-37F	Ign Coil (232)(390hp Standard Ign)	66	1	90.00
48-37G	Ign Coil (264)(390-400hp Standard Ign)	67	1	90.00
<hr/>				
48-37S	<b>TI Coil</b> (Delco 176)(64 TI)	64	1	140.00
48-37T	TI Coil (Delco 203)(65E 350-375hp)(Aug-Oct)	65E	1	140.00
48-37V	TI Coil (Delco 207)(327/350-375hp)	65-7	1	140.00
48-37W	TI Coil (Delco 210)(65/425hp,66E/390hp 4 Spd)	65-6E	1	140.00
48-37X	TI Coil (Delco 231)(66/425hp,66/390hp 4spd)	66	1	140.00
48-37Y	TI Coil (Delco 261)(66/390-425hp/66/390 Auto)	66	1	140.00
48-37Z	TI Coil (Delco 263)(67/427/390-435hp)	67	1	140.00
<hr/>				
48-38A	TI Connector (double Male Term)(on Distributor)	64-7	1	8.00
48-38B	TI Connector (single Male Term)	64-7	2	1.50 Each
48-38C	TI Connector (single Female Term)	64-7	2	1.00 Each
48-38D	T.I. Connector (double Female Term)(on Harness)	64-7	1	2.00
48-39A	Bolt & LW Set For T.I. Amp (all 65)(on Rad Supt)	65	1 SET	2.25 Set
48-39B	Bolt, LW, Nut Set For T.I. Amp (except 65)(TR)	64-7	1 SET	6.00 Set
48-39C	Ground Screw For TI To Radiator Supt	66-7	1	0.95
48-40	<b>Gasket- Distributor To Intake (cork)</b>	63-7	1	2.50
48-41	Distributor Spacer- F.I.	63-5	1	20.00
48-42	Ground Wire Lead- on Distrib Base Plate	63-7	1	11.00
48-43	Screws, TI Amplifier Rear Cover (yellow)(6)	64-7	1 SET	4.00 Set
48-44	Clip & Screw For TI Harness (under LH Catch)	66-7	1	2.00
<b>#48-45</b>	<b>Distributor Tag- Numbered &amp; Dated (silver up/red back* ...</b>	63-7	1	\$ 32.00
>Year, Engine Hp, TI Or Points, And Engine Assembly Date (Special Order Item -takes About 2 Weeks) <b>special order, dated, no returns</b> *(Tag be made silver up/red back, they came both ways, if you want red up*specify when ordering)				
<hr/>				
48-46	Plastic Thrust Button For Tach Gear	68-74	1	1.00
48-47	Washer For TI Distributor Pickup Coil	64-74	1	3.00
48-48	Coil Terminal Nuts, Retainers & Lw (2 Ea)	63-7	1 SET	10.00 Set

## Coil Supports

30-10	Coil Support Bracket 327	63-7	1	\$ 25.00
30-23	Coil Bolt & LW (327 coil bracket #30-10)	63-7	1	1.00
31-19A	Ignition Coil Support & Screw (396/427 Exc 3x2)	65-7	1	\$ 20.00
31-19B	Ignition Coil Support & Screw (427 3x2)	67	1	20.00
31-19C	427 Ignition Coil Screw	65-7	1	1.00
31-20	Coil Support Mounting Bolts (pr) (RBW)	65-7	1 PR	4.00 Pair

## TI Wiring - see section 43 for more wiring.

43-03A	Transistor Ignition Harness 64-65	64-5	1	145.00
43-03C	Transistor Ignition Harness 66-67	66-7	1	145.00
43-03D	Engine Harness Voltage Reg Adapter (all 65 TI)	65	1	38.00
43-03E	TI Harness Cloth Friction Tape (60' Roll)	64-7	1	15.00